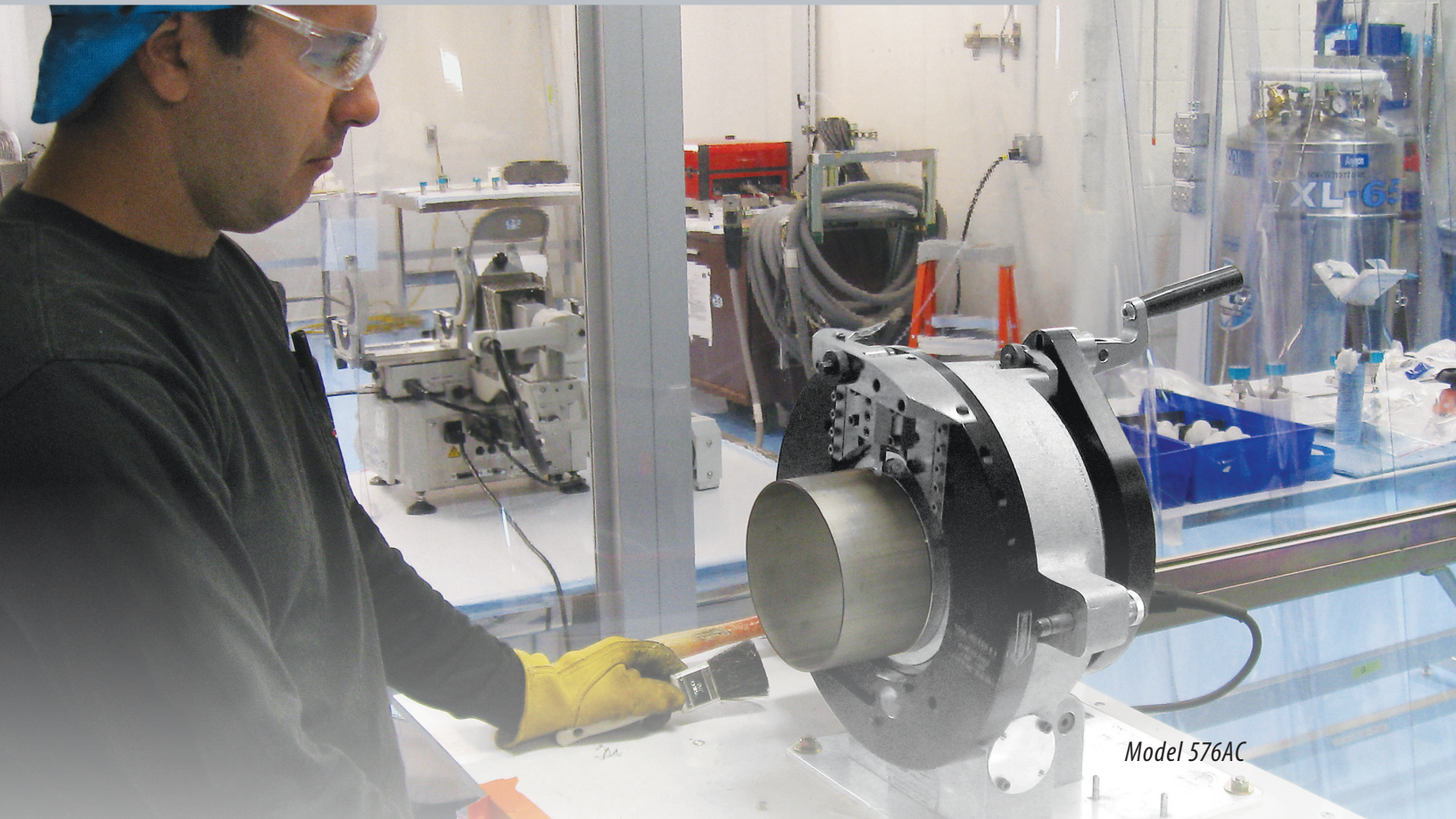


500^{SERIES} TUBE SEVERING EQUIPMENT

Save time and money with rapid, precision severing of .25" through 16" tubing.



Model 576AC

SEVERMASTER[®]

Model 572AC

Model 576AC

Model 5712AC

Model 5716AC

**The Perfect Solution
for high-volume tube
and pipe severing and
welding applications.**

TRI TOOL
BUILDING PERFORMANCE

The Severing Superstars



Model 572AC

Tri Tool's SeverMaster series tube severing equipment was designed to deliver a weld-ready finish for the high purity environment. With 4 models that cover the range of .25" to 16" OD tube, the SeverMaster series has become the favorite of tube production and welding professionals, and the preferred solution for stainless steel tube fabrication.

The SeverMaster's tool bit feed increment is adjustable to perfectly match the material being cut. A variable speed motor provides cutting speed control for longer bit life and ID burr reduction.

The innovative Quick Lock lever actuates a clamping collet with a single stroke, and opens easily to provide rapid collet changes.

Severing Solutions

- A tube manufacturer used two Model 572ACs to cut tubes to length as they emerged from an extruder. The two SeverMasters performed approximately 22,000 cuts on just one order.
- A nuclear research facility has been cutting fuel rods with a 572AC in a totally remote hot cell since 2004.
- A customer had a requirement to cut 5" diameter military warheads, filled with small projectiles. The reliable Model 576AC successfully cut about 45,000 warheads in a single month.
- Specially designed and modified Model 576ACs were utilized to cut nuclear materials during the cleanup of a weapons grade fabrication facility.

After a severing has been completed, an optional Squaring Module can be quickly positioned to square the tube for optimal end finish, length control, and burr elimination.

Rapid set-up and cycle times boost productivity

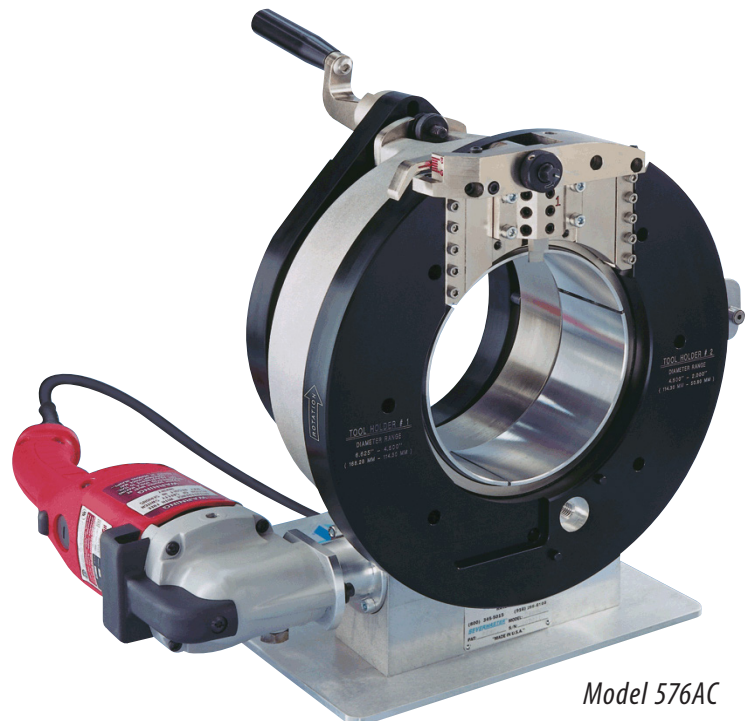
- Auto-Cycling resets the tool bit after each cut
- The adjustable Quick Lock lever accurately and securely clamps with one stroke

Produces a weld-ready finish

- Smooth roller bearing design for perfect severs
- Secure, self-centering full-contact collet prevents damage and distortion to thin wall tubes

Minimizes risk of contamination

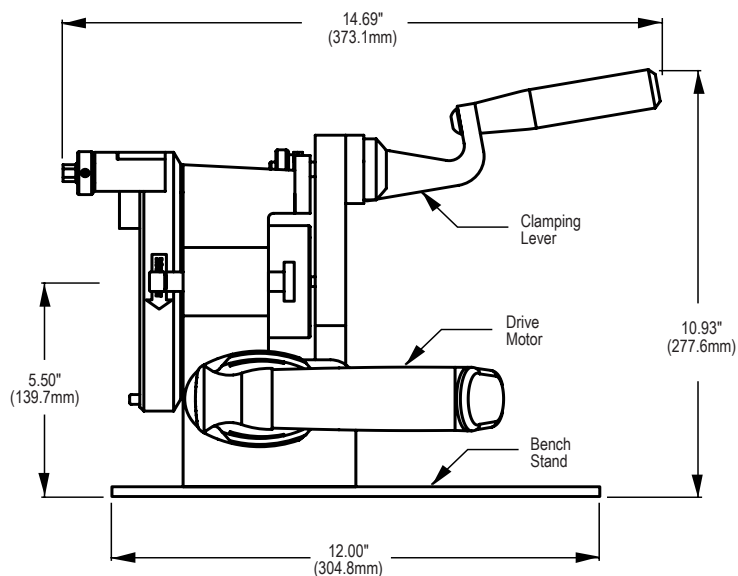
- Cold cutting by severing bit produces easily collectible ribbon-like chips
- No saw blades that produce particulates



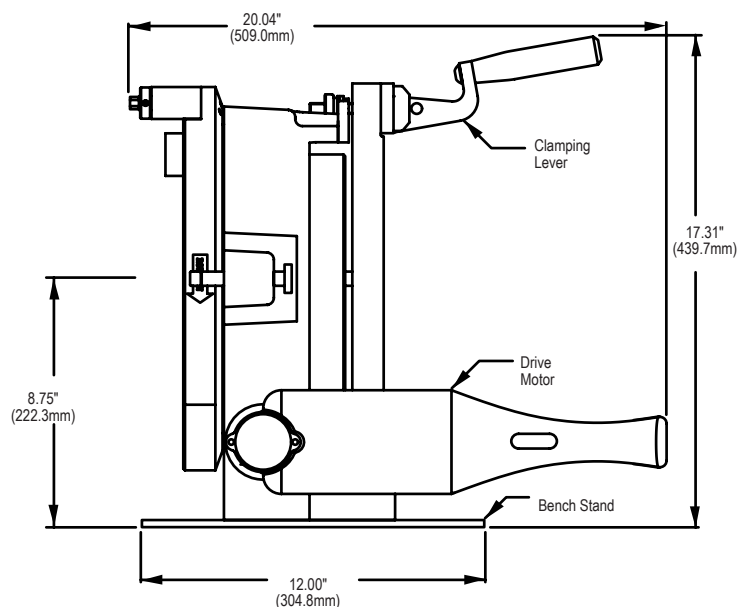
Model 576AC

The 572AC and 576AC comes with a heavy duty carrying case, one tool block module, sturdy baseplate, tool kit, and a severing tool bit. Size specific clamping collets are required and must be specified at time of ordering.

Model 572AC



Model 576AC



Specifications	572AC	576AC
OD Mounting Range	.250" (6.35mm) to 2.00" (50.8 mm)	1.00"(50.8mm)** to 6.63"(168.3 mm)
Max Wall	.065" (1.65 mm)	.156" (4.0 mm)
Collet Clamping Length	1.38" (35.0 mm)	3.00" (76.2 mm)
Tool Bit Travel	.001-.005" (.02-.13 mm)*	.001-.005" (.02-.13mm)*
Weight:	29 lbs. (13.0 Kg)	93 lbs. (42.2 Kg)
Available Drive	120VAC, 220VAC, Pneumatic	120VAC, 220VAC, Pneumatic
Squaring Module	SQM-1AC	SQM-2AC
*Adjustable - Per revolution. **With optional #3 tool holder		

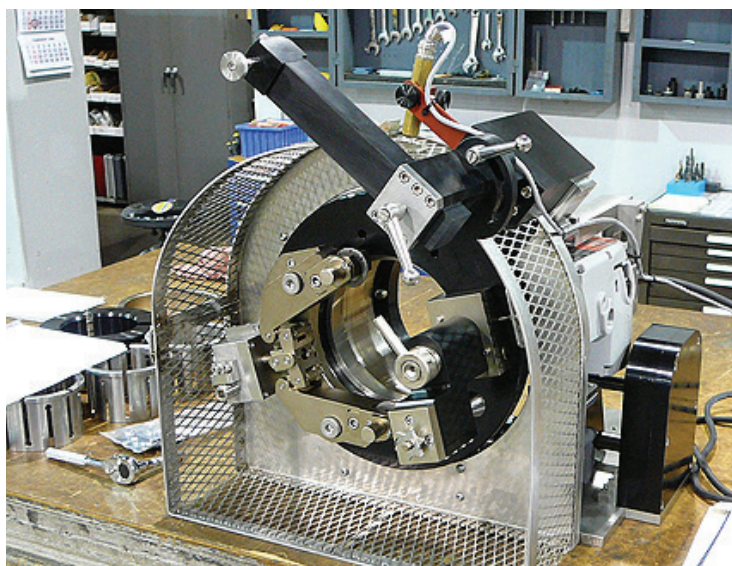
Note: Specifications are provided as a guideline only to assist with the selection of equipment and accessories. Information provided in this document is subject to change without notice. Contact your sales representative for specific application details or technical information.



A Model 576AC being used to sever high-purity stainless tube in a clean room fabrication area. The ability to perform precision severs while protecting the tube's electro-polished ID makes the 500 Series the perfect companion to autogenous orbital welding operations.



This custom built Model 576AC demonstrates the incredible versatility and flexibility of the 500 Series product range. Designed for critical use in the nuclear field, it offers complete remote control with automated roller wheel cutting for reduced cutting debris with radioactive metal.



This Model 576AC was specifically designed for use in a glove box. Configured with roller cutters, it performs remote chipless nuclear canister opening. Unique features include a pivoting base stand, alignment laser pointer for cut location indication, and a burnishing module to push the burr out of the way to allow removal of the inner can.

SEVERMASTER® Tube Severing Equipment



Model 5716AC

The larger 12" and 16" SeverMaster severing machines are the ideal solution when working with large, thin wall tube and pipe. Offering both high performance and consistent, repeatable precision, our Model 5712AC and 5716AC produce an excellent weld-ready finish with rapid cycle times.

The Perfect Weld Prep

- Variable speed motor increases bit life and reduces burrs
- Smooth roller bearing design for perfect severs
- Four interchangeable, self-centering collets prevent distortion of thin wall tubing
- Unique hybrid saddle/collet system, accepts torque while providing reliable, secure clamping

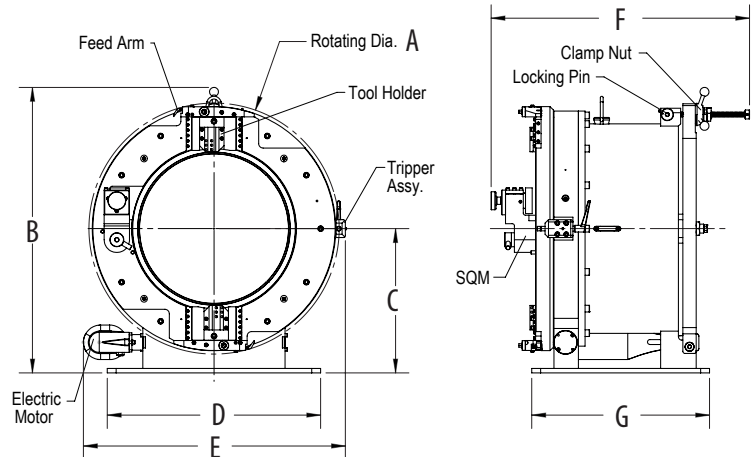
Enhanced Productivity

- Auto-Cycling resets the tool bit after each cut
- Standard dual severing for rapid cutting
- Lockable speed-nut allows fast and easy collet clamping
- Adjustable feed rate and motor speed for cut control

Safety

- Enclosed gears increase operator safety
- Operator friendly foot pedal control

The Models 5712AC and 5716AC come with all required wrenches, and an integrated accessory box, but do not include carrying cases. Size specific clamping collets are required and must be specified at time of ordering.



Dimensions	5712AC	5716AC
A	24.2" (613 mm)	28.2" (722 mm)
B	28.0" (711 mm)	32.0" (814 mm)
C	14.2" (360 mm)	16.2" (411 mm)
D	20.0" (508 mm)	24.0" (610 mm)
E	25.5" (647 mm)	29.5" (748 mm)
F	29.1" (738 mm)	29.1" (738 mm)
G	20.0" (508 mm)	20.0" (508 mm)

Specifications	5712AC	5716AC
Weight:	709 lbs (321.6 kg)	835 lbs (379.5 kg)
Max cutting head speed:	11 rpm (electric)	7 rpm (electric)
Cutting capacities - Tube OD	8.0" (20.32 cm) to 12.0" (30.48 cm)	12.00" (30.48 cm) to 16.00" (40.64 cm)
Cutting capacities - Pipe:	8" to 12" (Schedule 5 to 20)	12" to 16" (Schedule 5 to 20)
Max wall thickness:	0.250" (6.35 mm)	0.250" (6.35 mm)
Optional Squaring Module	SQM-3	SQM-3
Available Drive	120VAC, 220VAC, Pneumatic*	120VAC, 220VAC, Pneumatic*

*Pneumatic drive optional on request.

- Portable Precision Machine Tools
- Mechanized Welding Systems • Pipeline Equipment
- Code Welding • On-Site Construction Services
- Special Engineering & Custom Mfg. • Equipment Rentals

3041 Sunrise Blvd., Rancho Cordova, CA 95742
(800)345-5015 (916)288-6100 • www.tritool.com

