



PIPELINE SERIES SPLIT FRAME

Cut Pipe and Face Flange With One Machine

Wachs Pipeline Series Split Frame machines part, bevel, single point, counterbore and face flanges from 24" to 74" quickly and safely. All models are lightweight, field portable and easy to use, making them ideal for pipeline and plant maintenance. Produce precision machined finishes in a fraction of the time it take other cutting and prepping systems.



Operate using the optional remote pendant control

- Utilizes cold cutting process – safe for gas and petrochem lines and will not alter metallurgical quality or people
- Set up, cut and prep 48" pipe, 5/8" wall in one hour
- Face flanges in heat exchangers without removing tube bundles for fossil fuel, petrochemical and nuclear applications
- Cut and bevel up to 3-inch wall pipe found in nuclear steam generators

Low Maintenance – Rugged, Simple Design

- Steel construction, minimal frame parts
- Hardened bearing raceways minimize wear
- Proven low friction adjustable bearing system spreads load evenly
- Corrosion resistant coatings on all componets
- Tool slides and parts are interchangeable between machine sizes
- Heavy duty hinges and pin frame lock ensures machine rigidity

Fast Set-Up and Use

- Convenient lifting eyes provided for vertical and horizontal mounting
- Easy ratcheting mechanism opens and closes frame quickly
- Self squaring clamping system covers complete machine range – no clamp leg extensions required
- Self-contained, closed circuit hydraulic feed system activates tool slides and requires no adjustment
- Mounts to pipe with machine drive and tool slide installed – ready to operate
- Fast tool bit insertion and adjustment



Frame assembly rachets open quickly

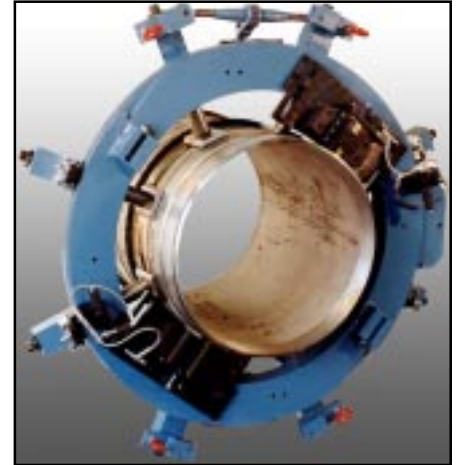
PIPELINE SERIES SPLIT FRAME/MODELS SF Series

Interchangeable Tool Slides – Utilize Standard Wachs Tools

- Parting Slide
- Beveling Slide
- Spring loaded slide for out of round pipe
- Counterbore slide
- Single point slide
single mount location for compound beveling and flange facing
- Bridge Slide
Dual mount for compound beveling and flange facing*



Bevel Tool Slide



Flange facing 48" flange

Optional Availability

- Purchase or lease
 - Short term rental
 - Technical Training
 - Full job responsibility with certified Wachs technician
- *Application will determine tool slide selection.*

SPECIFICATIONS

Machine Drive:Hydraulic

Feed:Variable 0 to .030 per revolution

Feed Method:Cam and adjustable plunger

Number of cams: 8 maximum

Hydraulic Requirements:10 gpm @ 1500 psi

Finish:Black Oxide and polyurthane paint

Range:

SF 2436 24" to 36" dia. pipe

SF 3648 36" to 48" dia. pipe

SF 4863 48" to 63" dia. pipe

SF 5674 56" to 74" dia. pipe

Weight:

SF 2436 950 lbs.

SF 3648 1,200 lbs.

SF 4863 1,450 lbs.

SF 5674 1,900 lbs

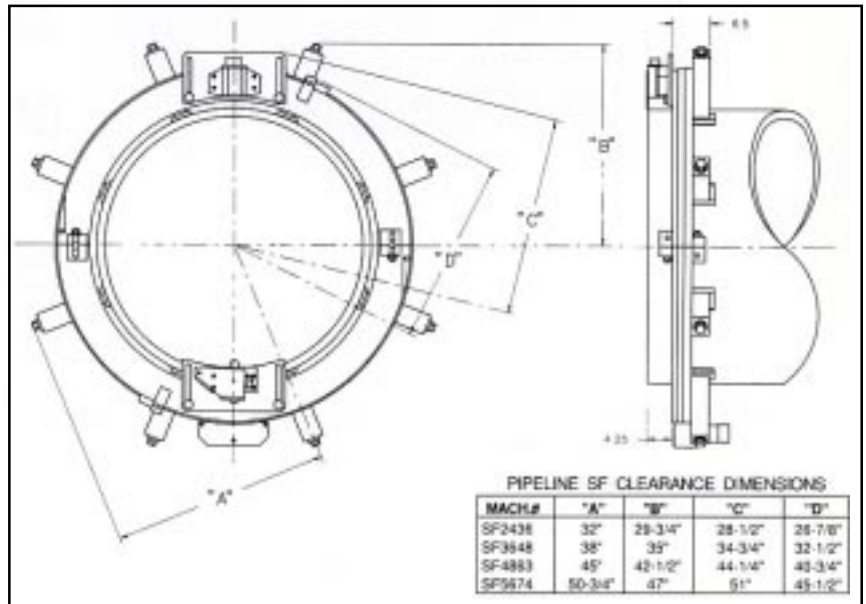
Bridge Slide:

Mechanical cam and plunger feed

Maximum tool travel: 12"

Feed rate: Variable 0 to .030 per revolution

Tooling: Insert and holder



Standard Equipment

- Operating Tools
- Parting Slide
- Beveling Slide
- Hydraulic Drive Assembly
- Operating Instructions

Optional Equipment

- Spring loaded slide
- Counterbore slide
- Template slide
- Bridge slide

Wachs Complete Line of Portable, Powered Tools for Pipes and Valves

CUT AND BEVEL PIPE
7 tools. Cut/Bevel all pipe schedules and sizes including heavy wall, plus large vessels.

END PREP PIPE
7 tools for fast, accurate end preps. All pipe schedules and sizes. 7/8" tube, 38" pipe. (22-915 mm)

STATIONARY AND PORTABLE HYDRAULIC POWER UNITS. To operate any Wachs Hydraulic tools.

OPERATE VALVES. 4 operators. All rising and non-rising stem valves. Gate valves to 60" (1545 mm). Hand held and truck mounted.

VALVE BOX CLEAN OUT SYSTEMS. 2 separate systems. One for Buffalo and Valve Box clean out and one for heavy duty clean out and excavation.



E.H. Wachs Company
100 Shepard St. Wheeling, IL 60090
Phone: (847) 537-8800 • Fax: (847) 520-1147 • www.wachsco.com